

TRucker Mount brackets TRM series

Staffe TRM serie TRucker Mount

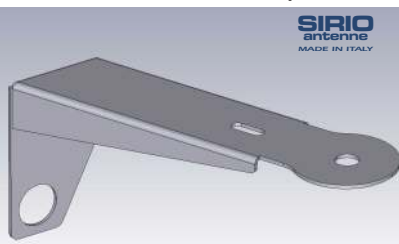
Strong brackets dedigned for the installation of CB antennas on trucks.

Made of high-strength steel, laser-cut and electropolished, they keep their robust characteristics unchanged allowing easy installation and simple calibration of the antenna on the truck.

Famiglia di staffe dedicate all'installazione di antenne CB sui mezzi pesanti.

Realizzate in acciaio ad alta resistenza, tagliate al laser ed elettrolucidate mantengono inalterate le loro caratteristiche estetiche e di robustezza permettendo una facile installazione e una semplice taratura dell'antenna sul veicolo.

TRM-3 (P/N 2522003.00)



SIRIO
antenne
MADE IN ITALY

(big antennas, grandi antenne)
Material: 2.5mm electro_ polished stainless steel
Materiale: Acciaio inox 2.5mm elettro lucidato.

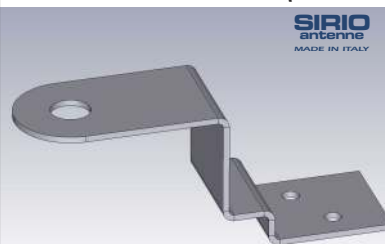
Mounting: (P) driver's side, sun visor upright
Montaggio: (P) montante aletta parasole lato guida



SCANIA

series from 2012 to 2017

TRM-4 (P/N 2522103.00)



SIRIO
antenne
MADE IN ITALY

Material: 2.5mm electro_ polished stainless steel
Materiale: Acciaio inox 2.5mm elettrolucidato

Mounting: (O) driver's side, above the door by rivets
Montaggio: (O) sopra porta lato guida tramite rivetti

MAN

TRM-6 (P/N 2522203.00)



SIRIO
antenne
MADE IN ITALY

Material: 3.0mm electro_ polished stainless steel
Materiale: Acciaio inox 3.0mm elettrolucidato

Mounting: (P) second upright sun visor on the driver's side. On DAF euro 6 on sun visor first screw driving side

Montaggio: (P) secondo montante aletta parasole lato guida. Su DAF euro 6 su aletta parasole prima vite lato guida

DAF
series XF euro 6



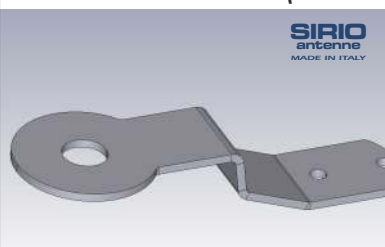
SCANIA
series FH



RENAULT
series T & CONFORT



TRM-7 (P/N 2522303.00)



SIRIO
antenne
MADE IN ITALY

Material: 3.0mm electro_ polished stainless steel
Materiale: Acciaio inox 3.0mm elettrolucidato

Mounting: (O) driver's side, above the door by rivets
Montaggio: (O) sopra porta lato guida tramite rivetti

MAN

series TGA, series TGA

TRM-12 (P/N 2522403.00)



SIRIO
antenne
MADE IN ITALY

Material: 2.5mm electro_ polished stainless steel
Materiale: Acciaio inox 2.5mm elettrolucidato

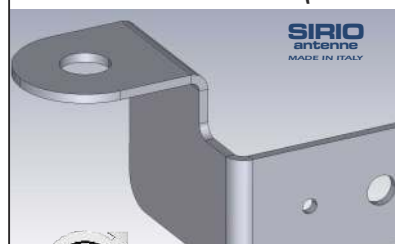
Mounting: (V) by using two screws of the vertical upright on the driver's side door

Montaggio: (V) con le due viti del montante verticale sulla porta lato guida

IVECO

STRALIS, STRALINO, EUROCARGO

TRM-13 (P/N 2522503.00)



SIRIO
antenne
MADE IN ITALY

Material: 3.0mm electro_ polished stainless steel
Materiale: Acciaio inox 3.0mm elettrolucidato

Mounting: (P) second upright of the sun visor on the driver's side

Montaggio: (P) secondo montante aletta parasole lato guida



FH 1a serie, 1st series FH

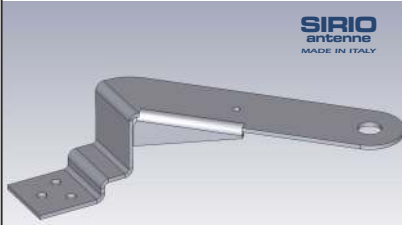
The logos shown here are trademarks property of their respective manufacturers and indicate only the compatibility of the accessories. They do not indicate their origin.

I loghi qui riportati sono marchi di fabbrica di proprietà dei rispettivi produttori e indicano unicamente la compatibilità degli accessori. Non indicano la loro provenienza.



SIRIO
antenne

HI-QUALITY ANTENNAS MADE IN ITALY

TRM-19 (P/N 2522603.00)

SIRIO
antenne
MADE IN ITALY

Material: 3.0mm electro-polished stainless steel
Materiale: Acciaio inox 3.0mm elettrolucidato

Mounting: **V** driving side, mirror spacer
Montaggio: **V** distanziali specchio lato guida

MAN

TRM-22 (P/N 2522703.00)

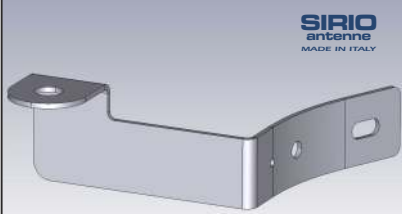
SIRIO
antenne
MADE IN ITALY

(big antennas, grandi antenne)
Material: 3.0mm electro-polished stainless steel
Materiale: Acciaio inox 3.0mm elettrolucidato

Mounting: **V** driver's side, by the two screws of the door's vertical upright
Montaggio: **V** con le due viti del montante verticale porta lato guida.

IVECO

STRALIS nuova serie, new series

TRM-23 (P/N 2522803.00)

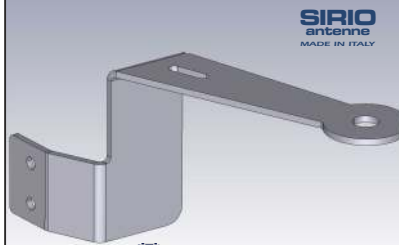
SIRIO
antenne
MADE IN ITALY

Material: 3.0mm electro-polished stainless steel
Materiale: Acciaio inox 3.0mm elettrolucidato

Mounting: **P** first upright of the sun visor on the driver's side
Montaggio: **P** primo montante aletta parasole lato guida



nuova serie FH, FH new series

TRM-33 (P/N 2523003.00)

SIRIO
antenne
MADE IN ITALY

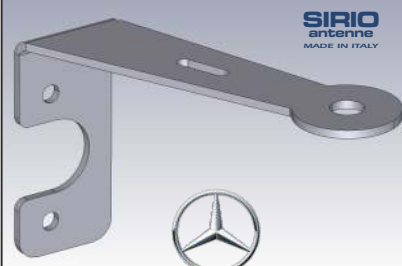
Material: 4.0mm electro-polished stainless steel
Materiale: Acciaio inox 4.0mm elettrolucidato

Mounting: **V** driver's side, vertical upright of the door by rivets
Montaggio: **V** montante verticale porta lato guida tramite rivetti



SCANIA

anno 2017, year 2017

TRM-42 (P/N 2523103.00)

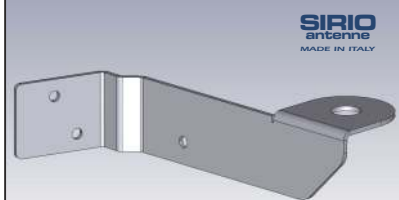
SIRIO
antenne
MADE IN ITALY

Material: 4.0mm electro-polished stainless steel
Materiale: Acciaio inox 4.0mm elettrolucidato

Mounting: **P** driver's side, above the first anchorage of sun visor
Montaggio: **P** sopra primo ancoraggio lato guida aletta parasole



ACTROS 2016

TRM-52 (P/N 2523203.00)

SIRIO
antenne
MADE IN ITALY

Material: 2.5mm electro-polished stainless steel
Materiale: Acciaio inox 2.5mm elettrolucidato

Mounting: **V** driver's side door, with the 2 screws and 2 rivets (enclosed) on the vertical upright
Montaggio: **V** porta lato guida, sul montante verticale con 2 viti e 2 rivetti (forniti).

DAF

serie XF, series XF

TRM-111 (P/N 2523303.00)

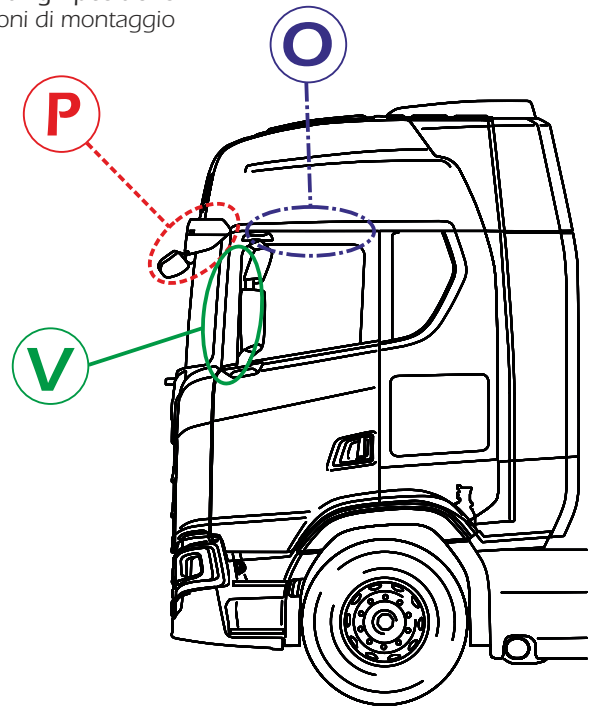
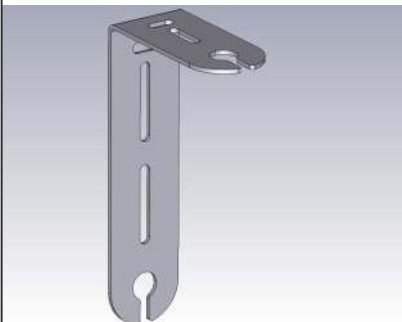
SIRIO
antenne
MADE IN ITALY

Material: 3.0mm electro-polished stainless steel
Materiale: Acciaio inox 3.0mm elettrolucidato

Mounting: **P** driver's side, above the first anchorage of sun visor
Montaggio: **P** sopra 1° ancoraggio lato guida aletta parasole

IVECO
EUROCARGO

Mounting positions
Posizioni di montaggio

**M-2 (P/N 2503203.00)**

Material: 2.5mm polished stainless steel
Materiale: Acciaio inox 2.5mm lucidato

Mounting: universal bracket with unspecified installation
Montaggio: staffa universale per installazione generica



SIRIO
antenne

HI-QUALITY ANTENNAS MADE IN ITALY