



SCO 2451 Dual-Band

FEATURES:

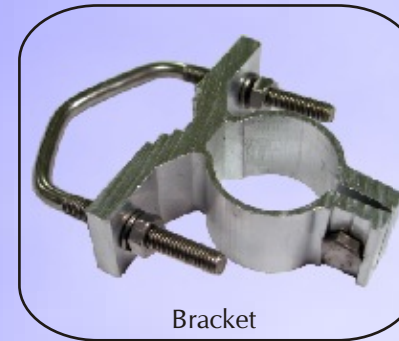
- ▶ Base station dual band antenna designed for WLAN systems working on 2.4-2.485MHz and 5.15-5.875 MHz
- ▶ High gain omnidirectional antenna for long distances multipoint connections
- ▶ Radiant element made of PTFE PCB for high power handling and low losses. Fiberglass tube housing and N-female connector with gold plated central pin
- ▶ Supplied with an aluminium bracket for an easy installation on the mast.

CARATTERISTICHE:

- ▶ Antenna dual band per stazione base per sistemi WLAN per le bande 2.4-2.485MHz e 5.15-5.875 MHz
- ▶ Omnidirezionale ad alto guadagno per connessioni multipunto a grandi distanze
- ▶ L'elemento radiante è realizzato con circuito stampato su substrato in PTFE protetto da un tubo in fibra di vetro per ottime prestazioni in potenza e basse perdite. Connettore N-femmina alla base con spinetta dorata
- ▶ Fornite con una staffa in alluminio per una facile installazione su palo

Technical Data:

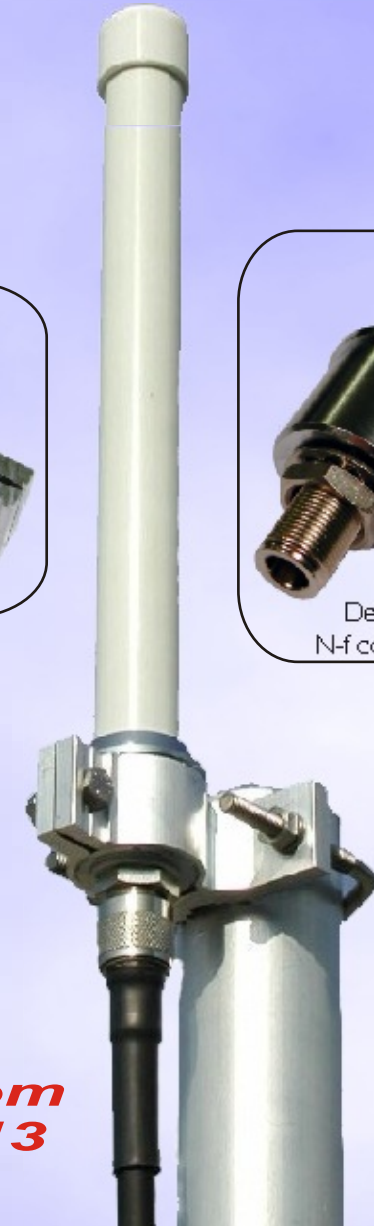
Type	: Colinear Dipole Array
Frequency Range @ SWR 2	: 2.4 - 2.485 GHz & 5.15 - 5.875 GHz
Impedance	: 50
Radiation (H-plane)	: 360° omnidirectional
Radiation (E-plane) Beamwidth @ - 3dB	: 30° @ 2.4425 GHz; 20° @ 5.5125 GHz
Polarization	: Linear Vertical
Gain	: 4 dBi @ 2.4 - 2.485 GHz 6 dBi @ 5.15 - 5.875 GHz
Max Power (CW) @ 30°C	: 5 Watts
Height (approx)	: 255 mm
Weight (approx)	: 330 gr
Connector	: N-female, gold plated central pin



Bracket



Detail of N-f connector



**Available from
October 2013**