

DUAL MIKE WITH CBTALK APP

Download the CBTalk APP
Android/iOs

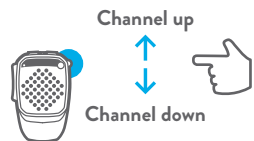


PTT CBTALK

Push and talk into CBTalk



CHANGE A CHANNEL ON CBTALK



LED

- Turning ON:**
Blue led 3 sec.
- Turning OFF:**
Red led 3 sec.
- Pairing:**
Red and blue leds alternated
- Smartphone paired to Dual Mike:**
Blue led blinking
- Smartphone's pairing not successful:** red led blinking

LIGHT RING

- Default color:**
Steady blue (it will be set through the CBTalk APP)
- Incoming call:**
Steady white
- Low battery:**
blinking red
- PTT CB pressed:**
Steady yellow



Prodotto o importato da:
CTE INTERNATIONAL srl
Via. R.Sevardi 7 42124 Reggio Emilia - Italia.
Prima dell'uso leggere attentamente le istruzioni.

Produced or imported by:
CTE INTERNATIONAL srl
Via. R.Sevardi 7 42124 Reggio Emilia - Italy.
Read the instructions carefully before installation and use.

Vertrieb durch: **ALAN ELECTRONICS GmbH**
Daimlerstraße 1K - D-63303 Dreieich Deutschland.
Vor Benutzung Bedienungsanleitung beachten.

Importado por: **MIDLAND IBERIA, SA**
C/Cobalt, 48 - 08940 Cornellà de Llobregat, Barcelona - España.
Antes de utilizar, lea atentamente el manual de uso.

Importé par: **ALAN FRANCE S.A.R.L.**
5, Rue Ferrie, Zac les Portes du Vexin 95300 Ennery - France.
Avant l'utilisation, lire les instructions.

To download the complete user manual and for information about the warranty
please visit www.midlandeurope.com



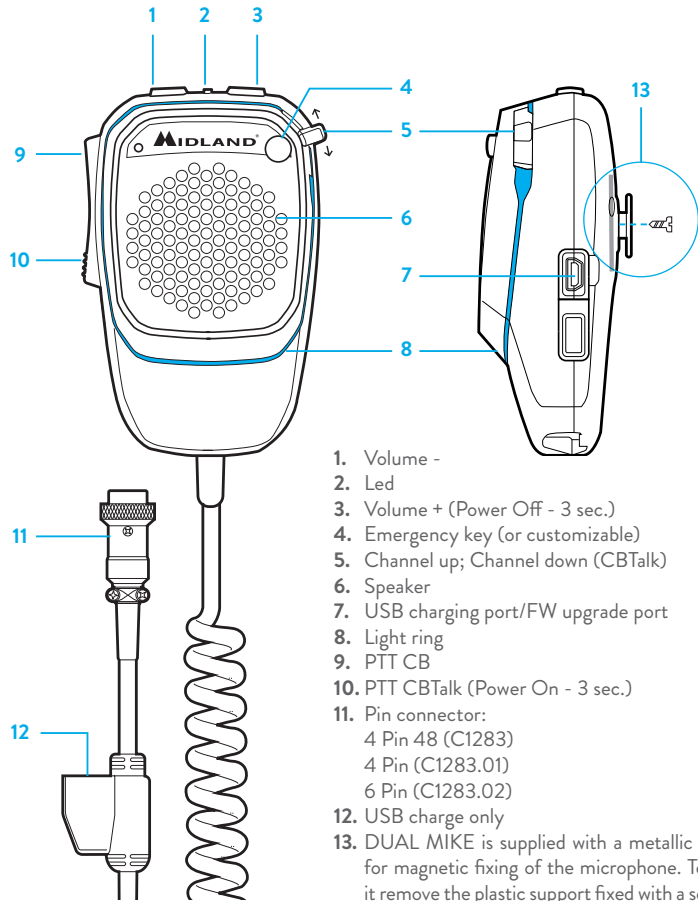
CB MICROPHONE DUALMIKE BLUETOOTH MICROPHONE



QUICK GUIDE

EN

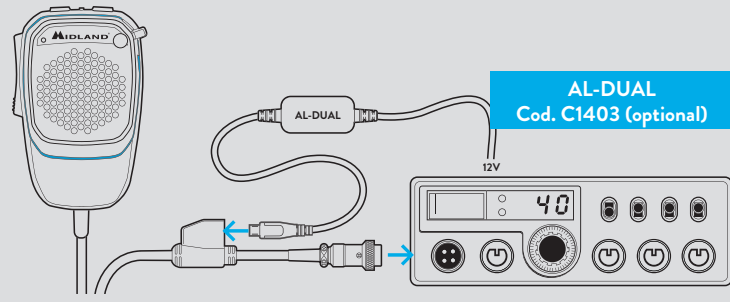
DUALMIKE OVERVIEW



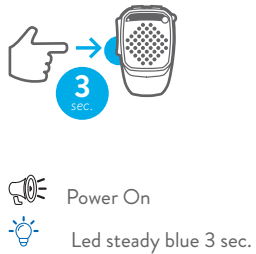
1. Volume -
2. Led
3. Volume + (Power Off - 3 sec.)
4. Emergency key (or customizable)
5. Channel up; Channel down (CBTalk)
6. Speaker
7. USB charging port/FW upgrade port
8. Light ring
9. PTT CB
10. PTT CBTalk (Power On - 3 sec.)
11. Pin connector:
4 Pin 48 (C1283)
4 Pin (C1283.01)
6 Pin (C1283.02)
12. USB charge only
13. DUAL MIKE is supplied with a metallic plate for magnetic fixing of the microphone. To use it remove the plastic support fixed with a screw.

GETTING STARTED

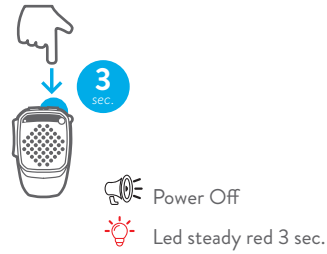
Remove the standard microphone supplied with your transceiver and plug-in DUALMIKE



POWER ON



POWER OFF



USING DUAL MIKE WITH YOUR CB RADIO



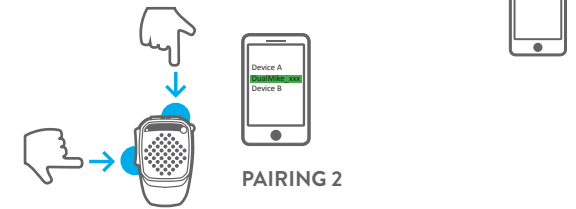
PTT CB

Press and talk towards the microphone

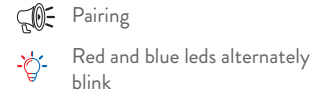


USING DUAL MIKE WITH SMARTPHONES

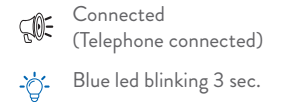
3 sec.
PRESS TOGETHER



PAIRING 1



PAIRING 2



HAND-FREE PHONE CALLS



To answer/to end a call



To reject an incoming call



AUDIO VOLUME



To make a voice dial



Bop (max vol. Beep)