

ROTATORS



G-2800DXA/DXC

Extra Heavy Duty
Supplied Accessories:
40 m Control cable with Connector*



G-1000DXA/DXC

Medium / Heavy Duty

G-800DXA

G-800SA
Medium Duty



G-450ADC/CDC

Light Duty



G-5500DC

Azimuth-Elevation Rotator

Models	G-2800DXA ^{1*} G-2800DXC ^{2*}	G-1000DXA ^{1*} G-1000DXC ^{2*}	G-800DXA ^{1*}	G-800SA	G-450ADC G-450CDC	G-5500DC
Recommended Application	Heavy-duty applications. Recommended for in-tower mounting.	Medium/heavy-duty for large HF arrays.	Medium-duty, for medium/large HF/VHF arrays.		Light to medium duty. Low price, perfect entry level rotator.	Azimuth-Elevation Combination for space communication.
Wind Load	3 m ²	2,2 m ²	2 m ²	2 m ²	1 m ²	AZ: 2 m ² EL: 1 m ²
K-Factor ^{3*}	950	230	180	180	100	AZ: 200 EL: 80
Stationary Torque	25,000 kg/cm	6,000 kg/cm	4,000 kg/cm	4,000 kg/cm	3,000 kg/cm	AZ: 4,000 kg/cm EL: 4,000 kg/cm
Rotation Torque	2,500–800 kg/cm	1,100–600 kg/cm	1,100–600 kg/cm	800 kg/cm	800 kg/cm	AZ: 600 kg/cm EL: 1,200 kg/cm
Max. Vert. Load	300 kg	200 kg	200 kg	200 kg	100 kg	AZ: 200 kg EL: 30 kg
Max. Vert. Intermittent Load	1,200 kg	800 kg	800 kg	800 kg	300 kg	AZ: 800 kg EL: 100 kg
Backlash	0.2°	1°	1°	1°	0.5°	AZ: 1° EL: 1°
Mast Size	48–63 φ	38–63 φ	38–63 φ	38–63 φ	32–63 φ	AZ: 38–63 φ EL: 32–43 φ
360° Rotation Time	50–120 sec	40–100 sec	40–100 sec	55 sec	56 sec	60 sec
180° Elevation Time	N/A	N/A	N/A	N/A	N/A	65 sec
Boom Diameter	N/A	N/A	N/A	N/A	N/A	EL 32–43 φ
Direct control from YAESU HF radio ^{4*}	○	○	○	N/A	N/A	N/A
PC control ^{5*}	○	○	○	N/A	N/A	○
Rotator Diameter x Height	200 φ x 345	186 φ x 300	186 φ x 300	186 φ x 300	186 φ x 263	186 φ x 254(W) x 500(H)
Rotator Weight	6.5 kg	3.5 kg	3.5 kg	3.5 kg	3.2 kg	9 kg
Cable Requirement	6	5	5	5	4	5 x 2
Supply AC Voltage	DXA: 117/220 V DXC: 220 V (CE)	DXA: 117/220 V DXC: 220 V (CE)	117/220 V	117/220 V	ADC: 117/220 V CDC: 220 V (CE)	117/220 V

*1: USA version only

*2: On models with "DXA/DXC" suffix, rotation speed and torque will vary with the speed control setting.

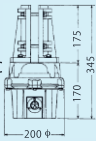
*3: K-Factor: Multiply turning radius times weight; add K-Factor for each antenna in "Christmas Tree" installations.

*4: Depending on HF radio, please refer to catalog of YAESU HF radio.

*5: Requires optional GS-232B.

Rotator Unit Dimensions

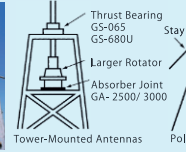
G-2800DXA/DXC



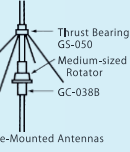
G-1000DXA/DXC
G-800DXA
G-800SA



Rotator Attachment Dimensions



Tower-Mounted Antennas



Pole-Mounted Antennas



OPTIONS



● **GS-232B**
Computer Controller for all DXA/DXC Series and G-5500DC Rotators



● **GS-680U**
Universal Bearing



● **GS-065**
Thrust Bearing



● **GS-050**
Thrust Bearing



● **GA-3000**
Absorber Joint for G-2800DXA/DXC Rotators



● **GC-038B/G**
Mast Clamp (Brown/Green) for G-1000DXA/DXC, G-800DXA, G-800SA, and G-450ADC/CDC Rotators



● **GC-048**
Mast Clamp for G-2800DXA/DXC Rotators



● **GL-33**
Mast Adjustment Plate

● **GA-2500**
Absorber Joint for G-1000DXA/DXC, G-800DXA, G-800SA, and G-450ADC/CDC Rotators

Control Cables

- 40 m Control cable with Connector
- 25 m Control cable with Connector